

## Antique Japanese Ebisu statue

- Material : wood
- 40 cm high
- Late 19th - early 20th century - Meij-Taisho Period
- Carved from one piece of solid wood
- Ebisu is one of the gods of fortune and of the fisherman.
- This statue is catching a fish with his fishing rod.
- Originating from Japan
- Nr. M5



Asian art

Rielerweg 71-73

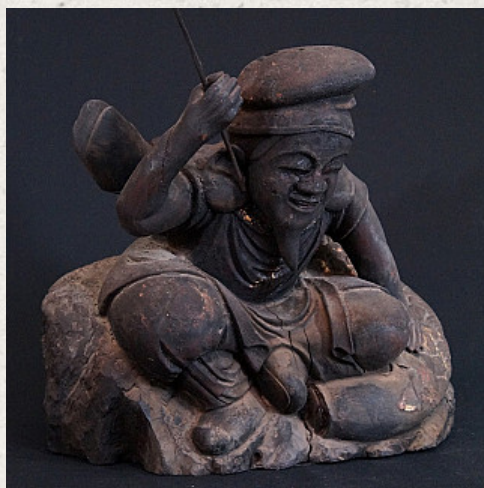
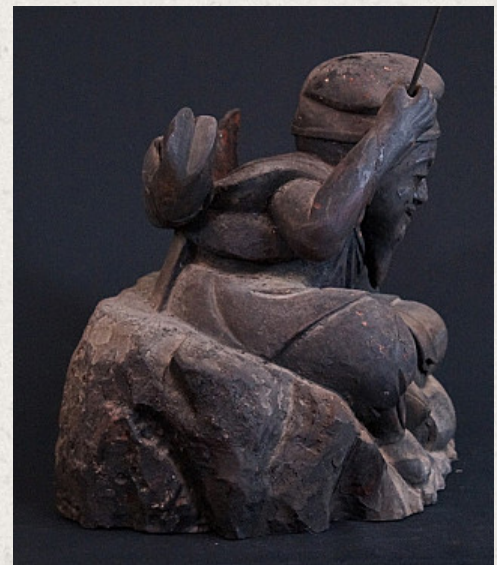
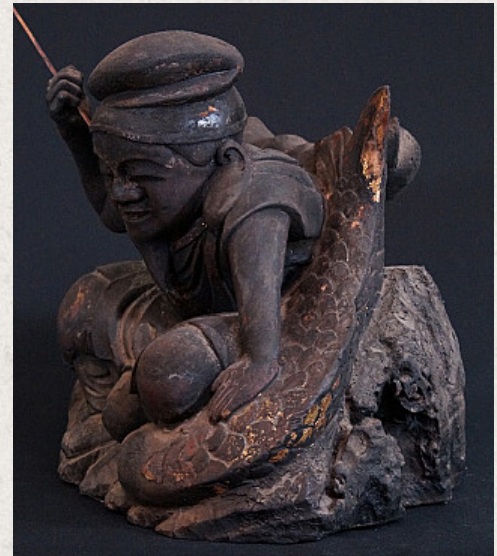
7416 ZB Deventer

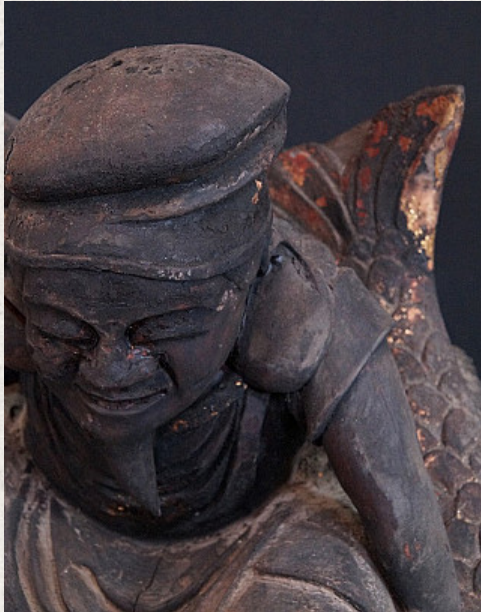
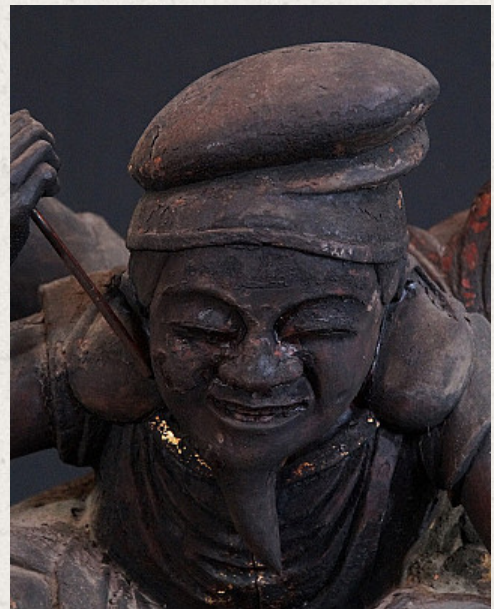
The Netherlands

[www.burmese-art.com](http://www.burmese-art.com)

[info@burmese-art.com](mailto:info@burmese-art.com)

+31-6-22192241





See on  
website